

AMETEK Precision Motion Control is a leading global supplier of brushless DC motors and blower systems for a wide range of applications. AMETEK's design expertise, exceptional customer service and state-of-the-art ISO 9001-2008 manufacturing enable AMETEK to provide high quality custom design in cost-effective packages.

AC Input Brushless DC Blowers (UL, CSA, ISO 9001-2008)

120 or 240 VAC brushless blower with high flow fan system. Blower offers a fan system that can be used for either vacuum or pressure. The backward curved centrifugal impellers of the working air provide high efficiency operation. These blowers are suitable for use in 0-50°C. The drive system has a rectifier/filter network, a commutation controller and brushless DC motor. The drive system in the Bypass configuration has a cooling fan. In the Thru Flow configuration, the drive motor is in the working air stream. **Electrical (Analog Voltage or Pulse Width Modulation Control):** The control signal input to an optical isolator provides maximum safety for the low voltage signal circuit. Application of a zero to 10 VDC will control blower speed and air performance. Control can also be achieved by application of a pulse width modulated zero to 10 VDC square wave at a frequency between 150 Hz and 400 Hz. It takes an increase in control voltage to restart the blower. **Mechanical (Screwdriver Adjustable):** Adjustment of a multiple-turn potentiometer controls blower speed and air performance. The blower performance will vary from the maximum shown on the curves to a minimum of a few inches of water.

- ▶ 5.7" Diameter Housing
- ▶ Maximum Pressure to 169 In. H₂O (Sealed)
- ▶ Maximum Air Flows to 268 CFM
- ▶ Electrical and Mechanical Control Versions

- Applications**
- ▶ Computer Peripherals
 - ▶ Material Handling
 - ▶ Air Samplers and Evacuators
 - ▶ Packaging Equipment
 - ▶ Photographic Hold Down
 - ▶ Business Machines, Printers, Collators
 - ▶ Air Beds
 - ▶ Vacuum Forming Equipment
 - ▶ Dental/Medical Evacuators
 - ▶ Sleep Assist Equipment
 - ▶ Fuel Cell
 - ▶ Textile Machines
 - ▶ Drying Equipment

Design Features

- ▶ UL Component Recognized
- ▶ CSA and TUV Certified
- ▶ Adjustable Air Performance
- ▶ Thermal Protection/Locked Rotor Protection
- ▶ Separation of Cooling Air and Working Air in Bypass Configuration
- ▶ Compact Size
- ▶ Long Life
- ▶ Low Noise to Power Ratio
- ▶ Working Air Is the Cooling Air in the Thru Flow Configuration



| Stock No. | Mfr.'s Type* | Overall Height (In.) | Output Tube Dia. (OD) (In.) | UL Type | Stage | VAC | Max. Amps | Watts | Max. Pressure (In. H ₂ O) Sealed | CFM (2nd Orifice) | Control Type | Config. | Filter Mfr.'s Type | EACH |
|-----------|--------------|----------------------|-----------------------------|---------|--------|-----|-----------|-------|---|-------------------|--------------|-----------|--------------------|---------|
| 70097998 | 116630-06 | 5.0 | 1.25 | A | Two | 120 | 4.5 | 250 | 50 | 66 | Electrical | Thru Flow | 551733001 | 796.83 |
| 70331338 | 116630-03 | 4.1 | 1.25 | A | Two | 120 | 4.5 | 250 | 50 | 66 | Electrical | Thru Flow | — | 751.10 |
| 70097987 | 116632-06 | 7.6 | 1.25 | B | Three | 120 | 4.5 | 250 | 81 | 66 | Mechanical | By Pass | 551733001 | 856.05 |
| 70097988 | 116634-03 | 6.0 | 1.25 | B | Single | 120 | 4.0 | 250 | 30 | 76 | Mechanical | By Pass | 551733001 | 721.46 |
| 70097989 | 116640-02 | 6.0 | 1.25 | B | Single | 120 | 4.0 | 250 | 31 | 76 | Electrical | By Pass | 551733001 | 729.04 |
| 70097985 | 116636-03 | 7.2 | 1.75 | B | Two | 120 | 4.5 | 250 | 51 | 104 | Mechanical | By Pass | 551692001 | 780.52 |
| 70097986 | 116642-03 | 7.2 | 1.75 | B | Two | 120 | 4.5 | 250 | 48 | 90 | Electrical | By Pass | 551692001 | 788.42 |
| 70097984 | 116643-03 | 6.2 | 1.75 | B | Single | 120 | 4.0 | 250 | 26 | 131 | Electrical | By Pass | 551692001 | 717.94 |
| 70097991 | 117417-01 | 7.9 | 1.25 | H | Three | 120 | 9.0 | 800 | 122 | 76 | Electrical | By Pass | 551733001 | 1147.64 |
| 70097992 | 117418-01 | 7.9 | 1.25 | H | Three | 120 | 9.0 | 800 | 122 | 76 | Mechanical | By Pass | 551733001 | 1139.55 |
| 70097994 | 119103-01 | 7.4 | 1.75 | H | Two | 120 | 8.0 | 800 | 78 | 131 | Electrical | By Pass | 551692001 | 1049.59 |
| 70097995 | 119104-01 | 7.4 | 1.75 | H | Two | 120 | 8.0 | 800 | 78 | 131 | Mechanical | By Pass | 551692001 | 1128.80 |
| 70097990 | 119101-01 | 6.3 | 1.75 | H | Single | 120 | 7.0 | 800 | 39 | 140 | Electrical | By Pass | 551692001 | 1093.30 |
| 70097993 | 119102-01 | 6.3 | 1.75 | H | Single | 120 | 7.0 | 800 | 39 | 140 | Mechanical | By Pass | 551692001 | 1118.03 |
| 70097996 | 119105-01 | 6.6 | 2.75 | H | One | 120 | 8.5 | 800 | 30 | 210 | Electrical | By Pass | — | 1158.40 |
| 70363863 | 117630-03 | 4.1 | 1.25 | D | Two | 240 | 2.6 | 400 | 49 | 63 | Electrical | Thru Flow | — | 787.73 |
| 70097933 | 117641-05 | 7.6 | 1.75 | E | Three | 240 | 3.5 | 400 | 69 | 82 | Electrical | By Pass | 551692001 | 1121.26 |
| 70097999 | 117459-05 | 8.5 | 1.25 | E | Four | 240 | 4.0 | 400 | 88 | 60 | Electrical | By Pass | 551733001 | 1816.18 |
| 70097941 | 117416-03 | 7.8 | 1.25 | K | Three | 240 | 10.0 | 1200 | 169 | 87 | Mechanical | By Pass | 551733001 | 999.43 |
| 70097905 | 117629-52 | 4.2 | 1.25 | D | Single | 240 | 2.5 | 400 | 31 | 67 | Electrical | Thru Flow | 551733001 | 789.27 |
| 70097918 | 116638-58 | 5.7 | 1.25 | E | Three | 120 | 5.0 | 250 | 81 | 56 | Electrical | By Pass | 551733001 | 779.16 |
| 70097917 | 116637-53 | 5.7 | 1.75 | E | One | 120 | 5.0 | 250 | 26 | 130 | Mechanical | By Pass | 551692001 | 800.36 |
| 70097906 | 117632-52 | 7.7 | 1.25 | E | Three | 240 | 3.5 | 400 | 72 | 65 | Mechanical | By Pass | 551733001 | 898.43 |
| 70097911 | 117638-53 | 7.7 | 1.25 | E | Three | 240 | 3.5 | 400 | 72 | 65 | Electrical | By Pass | 551733001 | 837.07 |
| 70097907 | 117634-51 | 6.0 | 1.25 | E | Single | 240 | 2.5 | 400 | 30 | 70 | Mechanical | By Pass | 551733001 | 875.91 |
| 70097912 | 117640-51 | 6.0 | 1.25 | E | Single | 240 | 2.5 | 400 | 30 | 70 | Electrical | By Pass | 551733001 | 884.31 |
| 70097908 | 117635-53 | 7.6 | 1.75 | E | Three | 240 | 3.5 | 400 | 61 | 90 | Mechanical | By Pass | 551692001 | 898.30 |
| 70097913 | 117641-51 | 7.6 | 1.75 | E | Three | 240 | 3.5 | 400 | 61 | 90 | Electrical | By Pass | 551692001 | 850.01 |
| 70097909 | 117636-51 | 7.3 | 1.75 | E | Two | 240 | 3.0 | 400 | 45 | 95 | Mechanical | By Pass | 551692001 | 887.11 |
| 70097915 | 117642-52 | 7.3 | 1.75 | E | Two | 240 | 3.0 | 400 | 45 | 95 | Electrical | By Pass | 551692001 | 895.50 |
| 70097910 | 117637-51 | 6.2 | 1.75 | E | Single | 240 | 2.5 | 400 | 24 | 106 | Mechanical | By Pass | 551692001 | 875.91 |
| 70097916 | 117643-52 | 6.2 | 1.75 | E | Single | 240 | 2.5 | 400 | 24 | 106 | Electrical | By Pass | 551692001 | 884.31 |
| 70097908 | 117415-51 | 7.8 | 1.25 | K | Three | 240 | 10.0 | 1200 | 169 | 87 | Electrical | By Pass | 551733001 | 1253.70 |
| 70097899 | 117416-51 | 7.8 | 1.25 | K | Three | 240 | 10.0 | 1200 | 169 | 87 | Mechanical | By Pass | 551733001 | 1245.29 |
| 70097904 | 119155-52 | 6.6 | 2.75 | K | One | 240 | 9.0 | 1200 | 45 | 268 | Electrical | By Pass | — | 1243.68 |
| 70097903 | 119154-51 | 7.3 | 1.75 | K | Two | 240 | 9.5 | 1200 | 111 | 140 | Mechanical | By Pass | 551692001 | 1213.92 |
| 70097902 | 119153-51 | 7.3 | 1.75 | K | Two | 240 | 9.5 | 1200 | 111 | 140 | Electrical | By Pass | 551692001 | 1217.45 |
| 70097900 | 119151-51 | 6.3 | 1.75 | K | Single | 240 | 7.5 | 1200 | 56 | 180 | Electrical | By Pass | 551692001 | 1231.31 |
| 70097901 | 119152-52 | 5.1 | 1.75 | K | Single | 240 | 9.5 | 1200 | 56 | 180 | Mechanical | By Pass | 551692001 | 1222.90 |

*Order air filters separately SKUs 70097882 (551733) or 70097883 (551692). ✓RoHS.

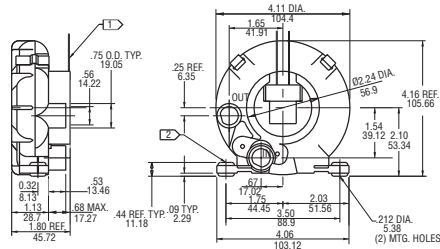
Regenerative Blowers

Minispiral and Spiral Blowers SE and SL Series

- Features:**
- ▶ Manufactured in the USA — ISO 9001 and NAFTA Compliant
 - ▶ Maximum Ambient: 40°C
 - ▶ Shaded Pole Motor with Ball Bearings
 - ▶ B10 Bearing Life: 30,000 Hours

Regenerative Blowers DR Series

- Features:**
- ▶ Manufactured in the USA — ISO 9001 and NAFTA Compliant
 - ▶ Standard Induction Motor: TEFC
 - ▶ Cast Aluminum Blower Housing, Impeller, Cover Inlet and Outlet Internal Muffling



| Stock No. | Mfr.'s Type | Voltage (VAC) | Frequency (Hz) | RPM | Insulation Class | Full Load (Amps) | Locked Rotor (Amps) | Weight (Lbs.) | EACH |
|-----------|-------------------|---------------|----------------|-----------|------------------|------------------|---------------------|---------------|---------|
| 70226383 | SE2B21 (081901) | 110/115 | 50/60 | 2850/3400 | B | 0.17/0.14 | 0.17/0.15 | 1.9 | 388.61 |
| 70097979 | SE3B21/036283 | 220/230 | 50/60 | 2850/3400 | B | 0.07/0.07 | 0.08/0.08 | 1.9 | 599.61 |
| 70097943 | SL2P2/036000 | 115 | 50/60 | — | B | 2.45/3.60 | 10.00 | 27.0 | 2355.20 |
| 70097944 | DR454R72M/080480 | 230/460 | 50/60 | — | F | 18.00/9.00 | 84.00/42.00 | 60.0 | 2260.70 |
| 70097951 | DR505AS72M/037543 | 230/460 | Three-60 | — | F | 6.80/3.40 | 38.00/19.00 | 82.0 | 2272.72 |
| 70097950 | DR656CK72X/080582 | 230/460 | Three-60 | — | F | 11.40/5.70 | 94.00/47.00 | 110.0 | 3229.21 |