



Three-phase filter without neutral line.

Filtro rete trifase senza neutro.

Mechanical Specifications:

Manufacture

Metal case, internal components sealed with self-extinguishing resin

Connections

Faston 6.3 x 0.8 mm ($\leq 20A$)
ground terminal connected to case

Electrical specifications

Rated voltage (Vr)	max 250 V _{up} to 400 Hz
Rated current (Ir)*	referred to room temp.= 40°C
Leakage current (IL)	$\leq 0,5$ mA
Voltage test (2s.)	line to ground 3000Vdc or 1800 Vac line to line 1700 Vdc
Climatic category	HPF (25/085/21) -25°C to +85°C

Caratteristiche tecniche:

Costruzione

Custodia metallica, componenti interni sigillati con resina autoestinguente Vo

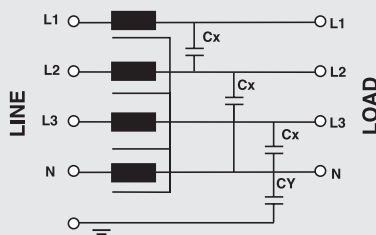
Terminali

Faston 6,3 x 0,8 mm ($\leq 20A$)
terminale di terra collegato alla custodia

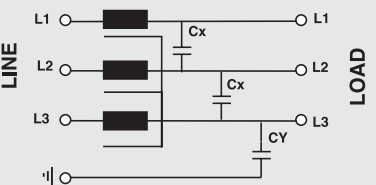
Caratteristiche elettriche:

Tensione nominale (Vr)	max. 250V~ a 400 Hz
Corrente nominale (Ir) *	*riferita ad una temp.di 40°C
Corrente di fuga (IL)	$\leq 0,5$ mA
Tensione di prova (2s.)	linea e massa 3000Vdc o 1800 Vac linea e linea 1700 Vdc
Categoria climatica	HPF (25/085/21) -25°C a +85°C

Circuit diagram

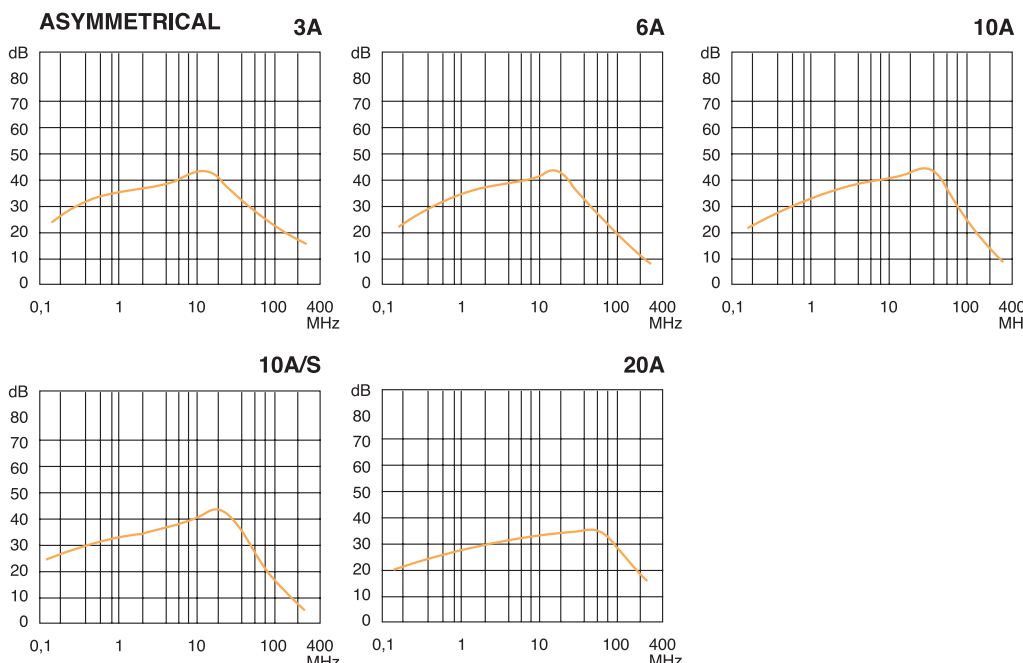


Circuito A

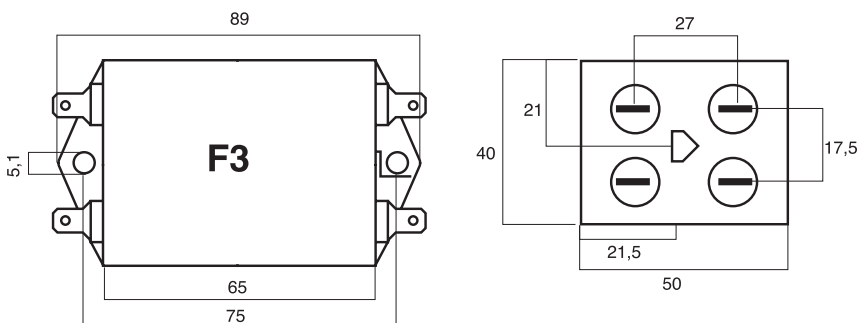


Circuito B

Code	IR(A)*	Cx1 (µF)	Cy (µF)	L(mH)	Case	Circuit
AR120.3A	3	0,1	4700	1	F3	A
AR120.6A	6	0,1	4700	0,5	F3	A
AR120.10A	10	0,1	4700	0,4	F3	A
AR120.10A/S	10	0,1	22000	0,4	F3	A
AR120.20A	20	0,1	22000	0,15	F3	A
AR120.3R.3A	3	0,1	4700	1	F3	B
AR120.3R.6A	6	0,1	4700	0,5	F3	B
AR120.3R.10A	10	0,1	4700	0,4	F3	B
AR120.3R.10A/S	10	0,1	22000	0,4	F3	B
AR120.3R.20A/S	20	0,1	22000	0,15	F3	B



Dimensions



Electronics
High Power
 Electromechanical
 Custom

