



EMV5232BI24DCTTOA

5/2-way solenoid valve, NAMUR, pneum. connections G 1/4", bistable, with manual override with detent, housing aluminium anodised

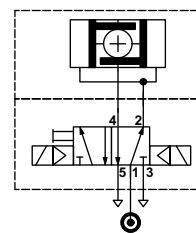


Image similar
-> silencer and coil plug connector not included in scope of delivery

TECHNICAL DATA

Function:	5/2-way, bistable design, with reversible seal
Type of operation:	indirect
Actuation:	Pulse (two coils)
Pneum. connections:	G 1/4" (1,3,5) NAMUR hole pattern (2,4)
Operating pressure:	1,5 ... 8 bar
Ingress protection:	IP65
Manual override:	with detent
Duty cycle:	100 %
Temperature range:	-10 ... +50 °C
Housing:	Aluminium anodized
Voltage:	24 V DC
Nominal power:	3 W
Other:	Two screws for mounting on actuator inclusive

PNEUMATIC SCHEME



DIMENSIONS

