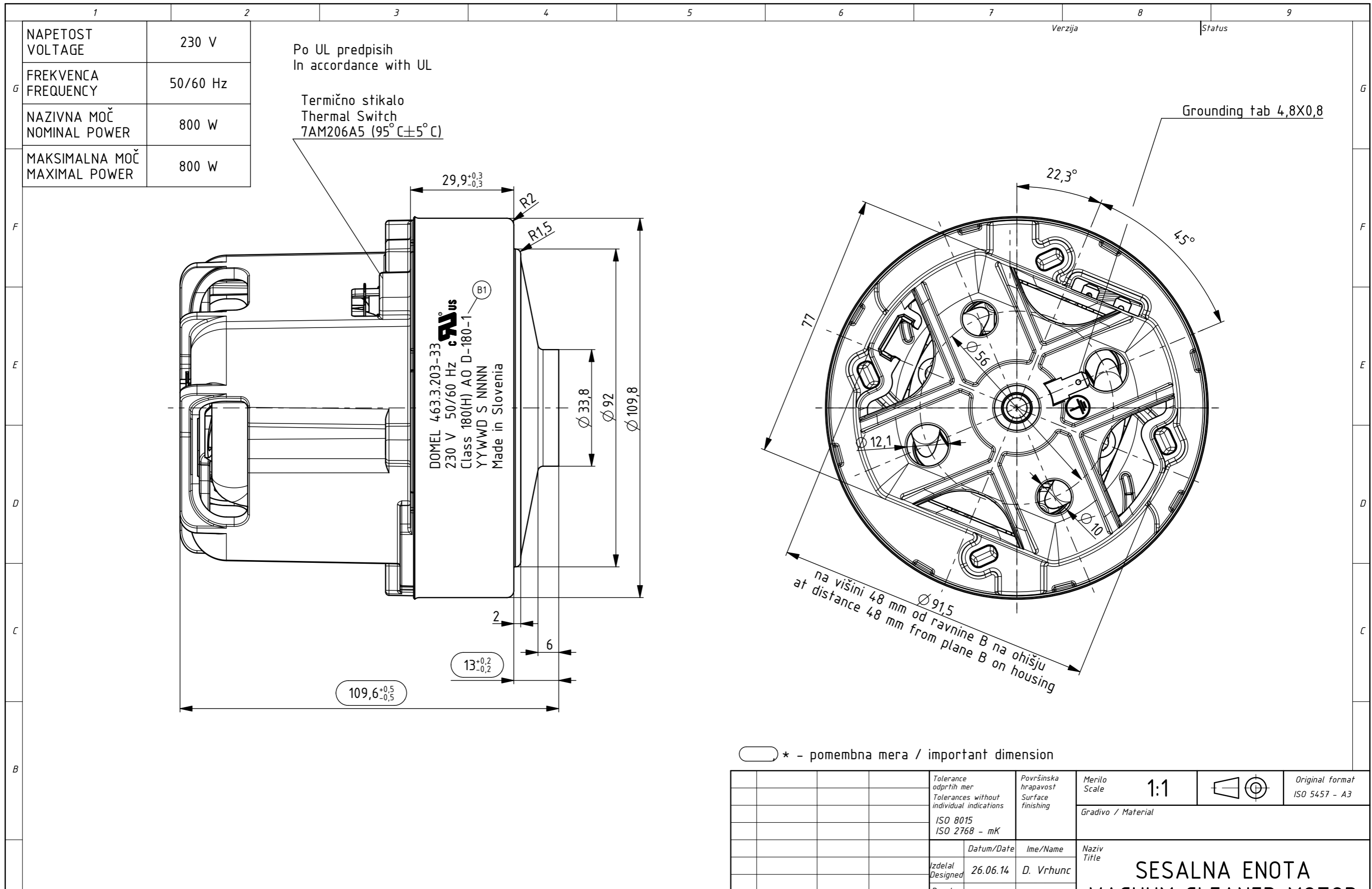


Izdelano s CAD/ProEngineer - ročno spreminjanje ni dovoljeno! Vsak prenos tretjim osebam ali uporaba v nedogovorjene namene ni dovoljena po zakonu o avtorskih pravicah. Made with CAD/ProEngineer - changing is not allowed! Any unauthorized copying of this drawing or unauthorized distribution of the information contained herein is prohibited.



OSNOVNE ZNAČILNOSTI		TYPICAL CHARACTERISTICS	
IZVEDBA	ENOSTOPENJSKA	FAN SYSTEM	SINGLE STAGE
ULEŽAJENJE	DVA KROGLIČNA LEŽAJA	BEARINGS	DUAL BALL
VRSTA PRETOKA	SKOZI MOTOR	DISCHARGE	THRU FLOW
SMER VRTENJA	DESNA	DIRECTION OF ROTATION	CW

○ * - pomembna mera / important dimension

Tolerance odprtih mer Tolerances without individual indications ISO 8015 ISO 2768 - mK		Površinska hrapavost Surface finishing		Merilo Scale 1:1	Original format ISO 5457 - A3
Datum/Date				Gradivo / Material	
Izdelal Designed 26.06.14		Ime/Name D. Vrhunc		Naziv Title SESALNA ENOTA VACUUM CLEANER MOTOR	
Pregl. Verified 02.02.16		Ime/Name J. Rihtaršič		Koda Code 463.3.203-33	
B1	12260	02.02.16	D. Vrhunc	List Sheet 3+	
A0	11372	26.06.14	D. Vrhunc	Stran Page 1	
Ozn. Mark	Št. obvestila Nr. of notice	Datum Date	Ime Name	Koda Code 4633203033_SESALNA_ENOTA	
DOMEL Otoki 21, 4228 Železniki, Slovenija					