

SQ SQ Series - Ø 1" 1/2

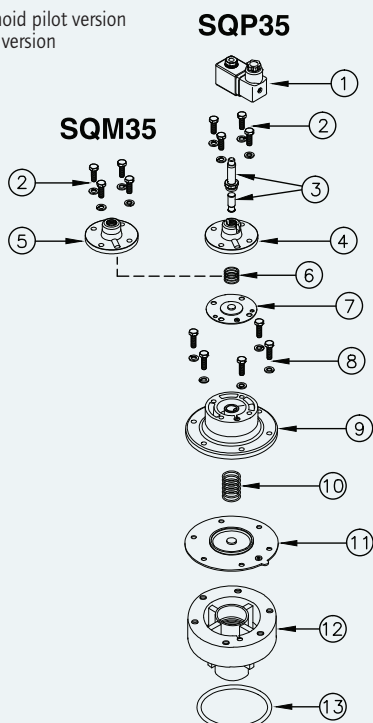


CHARACTERISTICS

<b>Fluid</b>	Filtered and oilfree compressed air
<b>Temperature range</b>	STD diaphragm -20°C; +80°C Viton diaphragm -20°C; +200°C
<b>Operating pressure</b>	min 0,5 bar - max 7,5 bar
<b>Body and cover</b>	Die cast aluminium
<b>Core tube</b>	Stainless steel
<b>Plunger</b>	Stainless steel
<b>Screws</b>	Stainless steel
<b>Coil insulation</b>	Class H
<b>Din's connector</b>	PG 9 EN175301-803
<b>Protection Din's connector + Coil</b>	IP65 EN60529
<b>Standard voltage</b>	24V/50-60Hz (±10%) 19VA 115V/50-60Hz (±10%) 19VA 230V/50-60Hz (±10%) 19VA 24VDC (± 10%) 18 Watt

DESCRIPTION	VALVE SQM35/SQP35
1 Coil + Din Connector	BH10...V/50-60Hz
2 Screws + Washers	VTE6x18+TROND6GROWER
3 Pole assembly	GPC10
4 Cover direct drive	TCOP10
5 Remote operated cover	TCOP10FM
6 Spring	TMOL10G
7 Diaphragm	M10
8 Screws + Washers	VTE6x20+TROND6GROWER
9 Cover	TCOP35N
10 Spring	TMOL25GHS
11 Diaphragm	M35
12 Body	TCOR35FMG
13 O-ring	G OR6337

SQP Integral solenoid pilot version  
SQM Remote pilot version



DESCRIPTION	VALVE SQO35/SQPO35
1 Coil + Din Connector	BH10...V/50-60Hz
2 Screws + Washers	VTE6x18+TROND6GROWER
3 Pole assembly	GPC10
4 Cover direct drive	TCOP10
5 Remote operated cover	TCOP10FM
6 Spring	TMOL10G
7 Diaphragm	M10
8 Screws + Washers	VTE6x20+TROND6GROWER
9 Cover	TCOP35N
10 Spring	TMOL25GHS
11 Diaphragm	M35
12 Screws	VTCE18x20
13 Body	TCOR35FMGS
13 O-ring	G OR6337

SQPO Integral solenoid pilot version  
SQMO Remote pilot version

